

MAIN CHART

COPYRIGHT © THEA DUECK 2015

## Pumpkin Seed Nametag

If you're looking for a cute Fall-themed nametag to wear to your next stitching weekend or guild meeting, try this new one! Use enclosed petit cross stitch alphabet for your name, or use the backstitched alphabet found in our Free Patterns on our website. We have a limited edition TINY PACK available in Catalogue online at [www.victoriasampler.com](http://www.victoriasampler.com)! Stitch this new nametag specially designed for this great FB Group! Happy Stitching! - Thea

### INSTRUCTIONS:

**Design Area:** 55w x 28h (3.9" wide x 2" high)

**Model:** 28ct Flax Cashel Linen

(Cut 7" wide X 5" high for finishing)



#### Symbols and Materials:

- DMC #8 Perle Cotton #782 - topaz dk
- Kreinik Mori #2063 - orange lt
- Kreinik Mori #2066 - orange dk
- ♥ Kreinik Mori #3017 - red lt
- Kreinik Mori #8050 - black
- TT Needlepoint Inc. #304 - brown
- Needlepoint Inc. #355 - green med
- Specialty button - bat

**1. BACK STITCH LETTERING:** Using 1 strand of Kreinik Mori #8050 black Back Stitch the words "Pumpkin Seed Stitches", as shown on Main Chart. **Diagram A.**

**2. PETITE CROSS STITCH LETTERING:** Cross Stitch lettering of your choice over ONE fabric thread, with 1 strand of Kreinik Mori #8050 black. **Diagram B and C.**

**3. WHEEL BARROW AND PUMPKINS:** Using 2 strands of silk floss Cross Stitch according to symbols on Main Chart. **Diagram**

**D. Note:** Some of the stitches on the wheel barrow are either 1/4 or 3/4 Cross Stitches. The 3/4 cross stitches have a dark diagonal line across the graph square. Use 2 strands of Needlepoint Inc. #304 brown for the crossing stitch. Back Stitch the wheel with 1 strand of Kreinik Mori #8050 black, as shown on Main Chart. **Diagram A. Note:** Using 1 strand of Kreinik Mori #3017 red lt Back Stitch the outlines on the pumpkins, shown as a dotted line on Main Chart. Back Stitch or Straight Stitch the pumpkin stalks with 2 strands of Needlepoint Inc. #304 brown, shown on Main Chart as a dark line. Using 1 strand of Needlepoint Inc. #355 green med Back Stitch the vines and grass as shown on Main Chart.

**4. BAT (optional):** Attach bat button with 1 strand of Kreinik Mori #8050 black to the right of the Petite Cross Stitch lettering, if space is available, as shown on Main Chart. Go through button twice to ensure stability.

**5. BLANKET STITCHES:** Using 1 strand of DMC #8 Perle Cotton #782 topaz dk work Blanket Stitches around the outside of the design area, as shown on Main Chart. **Diagram E 1-4.**

# Stitch Diagrams

COME UP AT THE DOT AND  
GO DOWN AT THE ARROW

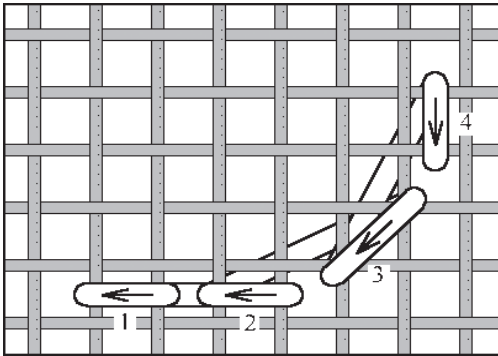


Diagram A. Back Stitch

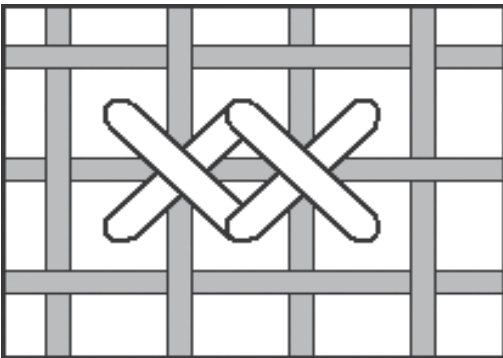


Diagram C. Cross Stitch over ONE fabric thread

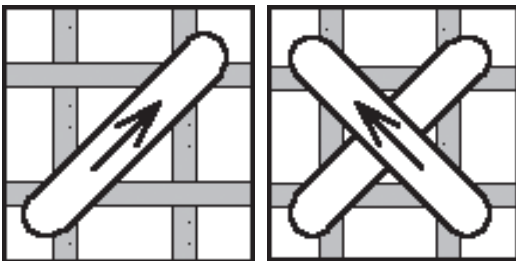


Diagram D. Single Cross Stitch - step 1 and 2

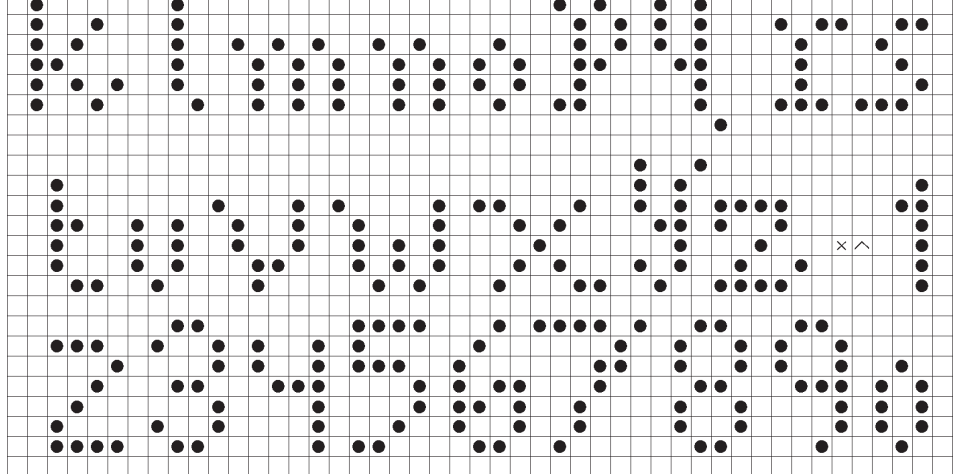


Diagram B. Alphabet - Cross Stitch over ONE fabric thread

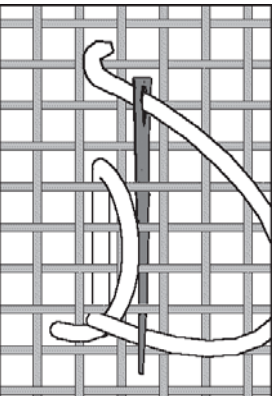


DIAGRAM E1.  
Blanket Stitch - start

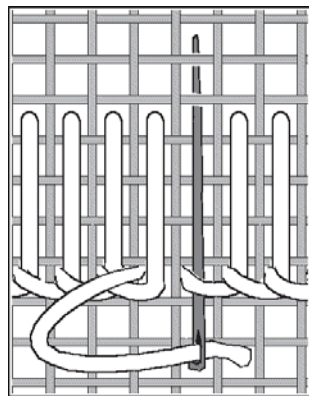


DIAGRAM E2.  
Blanket Stitch - finish

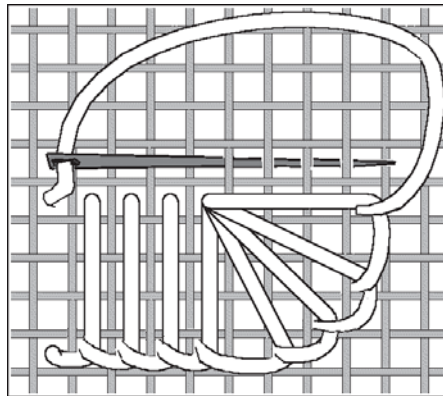


DIAGRAM E3.  
Blanket Stitch - turning outside corner

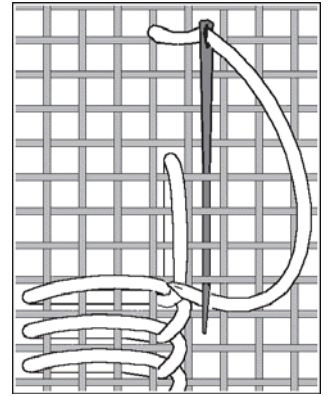


DIAGRAM E4.  
Blanket Stitch - turning inside corner

**FINISHING INSTRUCTIONS AND OPTIONS:** Stitched Design: Trim design fabric to 1/2" away from Blanket Stitches on all sides. Zig zag raw edges of design fabric to prevent unraveling. Fold over and finger press zig zag edges to the back of stitched design, mitering the corners as you come to them. Cut skirtex 1 15/16" high x 3 7/8" wide or desired size to fit under the zig zag edge. Iron skirtex flat. Insert skirtex under zig zag edges. Using 1 strand of matching cotton sewing thread slip stitch the zig zag edges of the design fabric to the skirtex. Make sure that the stitched design is centred, straight and square. For the back: Cut wool felt 1 15/16" high x 3 7/8" wide. Option: Use a pinking blade in the rotary cutter to give a nice scallop edge to the wool felt as you are cutting. Attach a clasp to the back of the wool felt with matching cotton sewing thread. **Note:** The clasp should be attached approx. 5/8" from the top and centred on the wool felt. Go over the clasp several times to secure. Centre the wool felt on top of the stitched design and slip stitch in place making sure that the clasp is at the top of the nametag. Congratulations look at you beautiful nametag. There are many variations and options to finishing, so just enjoy and create your own unique Pumpkin Seed Nametag!

THEA'S DESIGNS FROM THE VICTORIA SAMPLER TO BE FOUND ON THIS WEBSITE:

[www.victoriasampler.com](http://www.victoriasampler.com)

"Pumpkin Seed Nametag"  
©Copyright 2015 Thea Dueck  
The Victoria Sampler  
Phone (250) 656-3566  
Fax (250) 656-0447  
info@victoriasampler.com  
www.victoriasampler.com

The  
*Victoria*  
SAMPLER