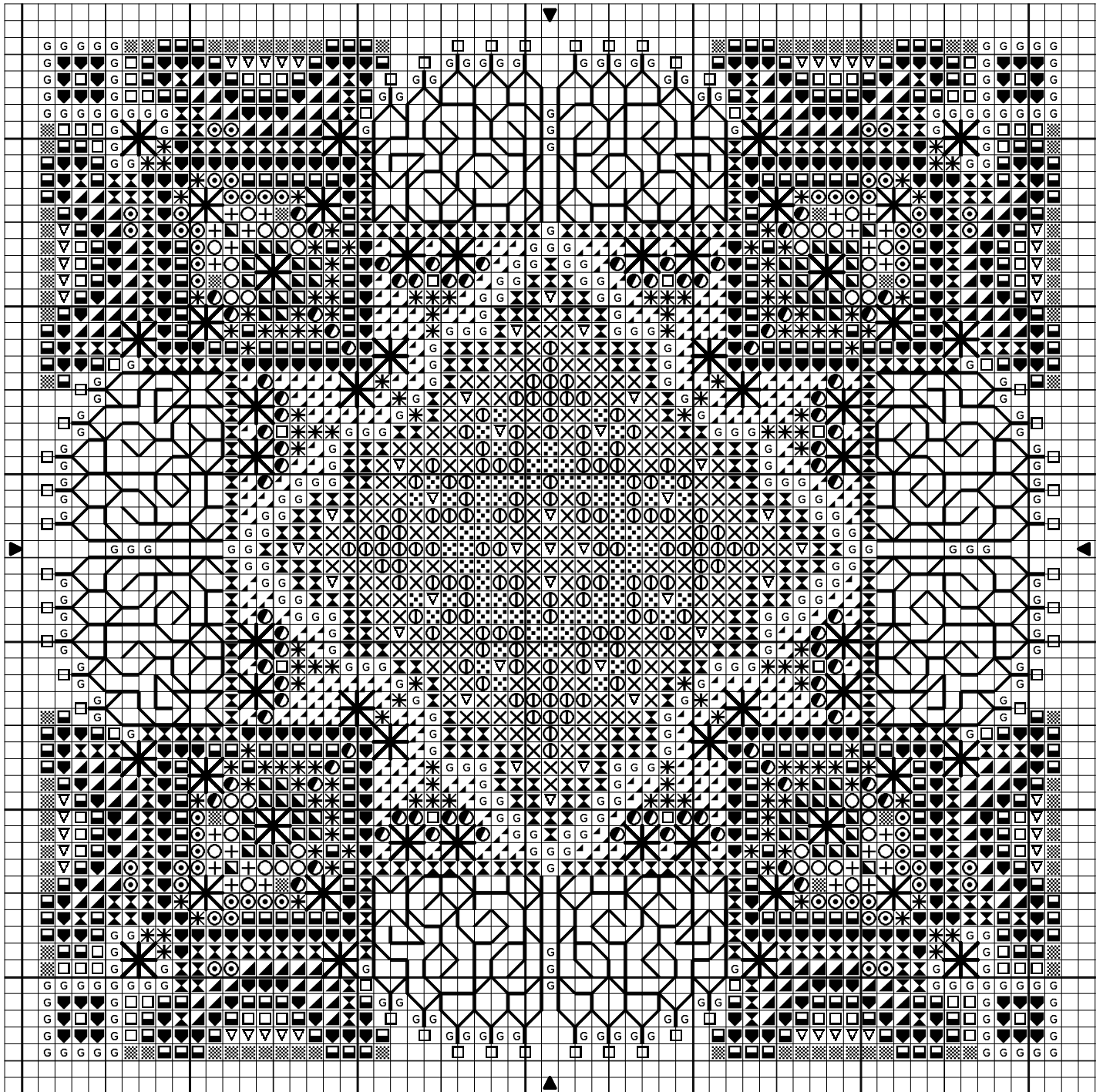


A Tiny Rose Mandala Garden



Design By: Martina Weber / Châtelaine 2003

Copyright © Martina Weber / Châtelaine 2003

A Tiny Rose Mandala Garden

DMC Thread Gatherer Silk'n colours Mill Hill Seed Bead

Algerian Eyelet over 4

Stranded Cotton



Antique Rose

SNC 064

Cross Stitch in:

Stranded Cotton



Antique Mauve med	316
Antique Violet med	3041
Antique Violet dk	3740
Navy lt	312
Navy Blue med dk	336
Sea Foam Green	503
Sea Foam Green med	502
Sea Foam Green dk	501
Sea Foam Green vy dk	500
Yellow Green med	732
Khaki Green dk	3011
Hazelnut Brown dk	420
Antique Gold lt	3822
Topaz lt	726
Blue Violet lt	341

Backstitch in:

Stranded Cotton

 Black 310

Beads in:

Seed Beads



Crystal
Gold

00161
00557

Stitch Count 61 x 61

Design Area 3 7/8 x 3 7/8 inches at 16ct

4 3/8 x 4 3/8 inches at 14ct

5 1/8 x 5 1/8 inches at 12ct

Note: This is a free gift design - not to be sold.

Stitch it for your pleasure only !

Backstitch with DMC 310 in one ply for the gates.

Design By: Martina Weber / Châtelaine 2003

Copyright © By: Martina Weber / Châtelaine 2003